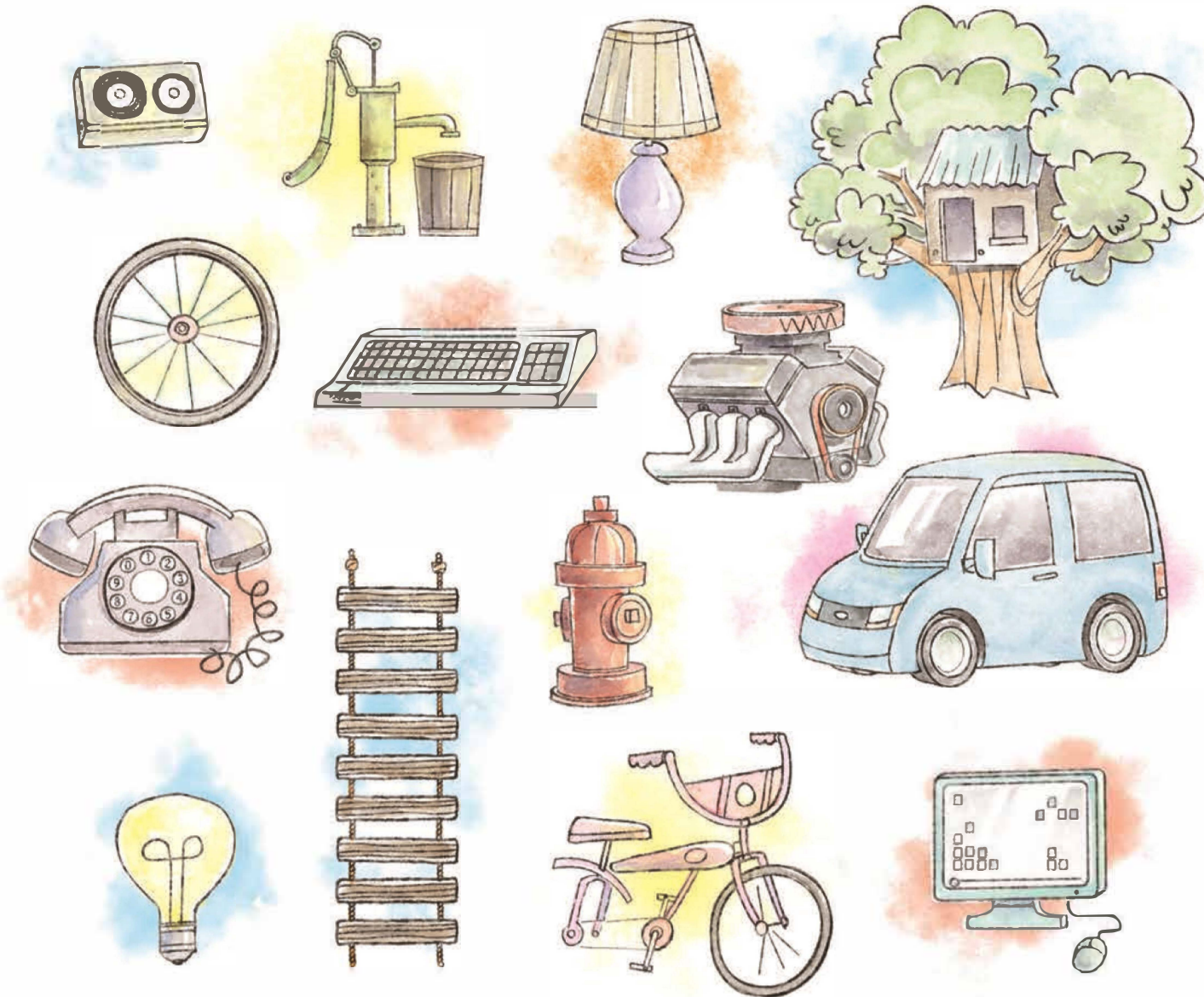


Useful Things

INSTRUCTIONS: Draw a line from the useful parts to the objects that need them. Not all parts are useful.



KEY PASSAGE: Psalm 47:7-8

BIG PICTURE QUESTION:

- Who is our King? Jesus is our King forever, and He rules over everything.

BIBLE STORY:

GOD REJECTED SAUL AS KING

- As king, Saul went to war against the Philistines.
- Saul wanted God's help in battle, but did not want to wait for Samuel.
- Saul disobeyed God, offering a sacrifice that only a priest should offer.
- God rejected Saul as king because of his sin.

FAMILY DISCUSSION STARTERS:

- What do you think Saul really cared about with his sacrifice?
- Why is it hard to trust God when we have to wait for things that we want right away?
- Can you think of a King whom God will never reject?

FAMILY ACTIVITY:

- Play "King of the Hill" with your kids. Talk to them about how God decided to replace Saul with an obedient king.

Younger Kids Activity Pages
Unit 10, Session 2

